

# Front loader Fendt CARGO



**FENDT**

## **An unbeatable combination – Fendt Vario with Fendt CARGO**



**The new Fendt front loader – Fendt CARGO – offers sophisticated technology for maximum productivity. It expands the Fendt product line with another reliable product for successful farmers. As a universal implement, it is the ideal partner for all Fendt Varios for versatile applications.**

**The CARGO underwent intensive testing under the toughest conditions and passed with flying colours. Whether for everyday farming work, toughest contracting jobs or in intensive municipal operations, the new Fendt CARGO proves its high performance capabilities for all applications.**



**The new front loader from Fendt**

<b>Cargo 4 X / 75</b>	<b>300 V / 400V</b>
<b>Cargo 4 X / 80</b>	<b>400 V</b>
<b>Cargo 4 X / 85</b>	<b>700 V *</b>
<b>Cargo 5 X / 85</b>	<b>700 V / 800 V</b>
<b>Cargo 5 X / 90</b>	<b>700 V / 800 V</b>

\* up to 28" wheels

**Contents**

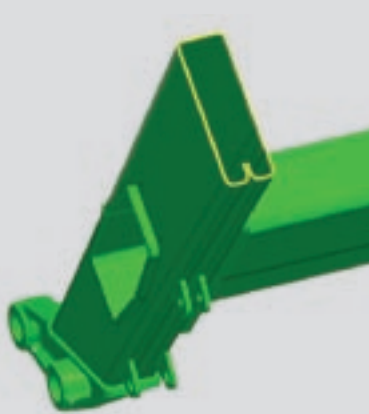
Arm	4 – 5
Mounting/removing	6 – 7
Controls	8 – 9
Operation/maintenance	10 -13
Attachments	14 - 15
Technical specifications	16

# The CARGO arm – perfectly tailored to your Vario

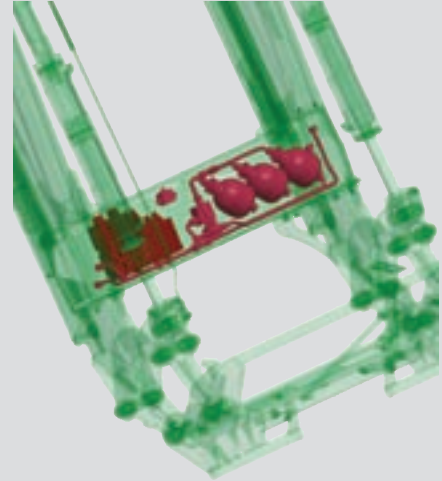
Mechanical parallel lift – compact design through Z-bar linkage



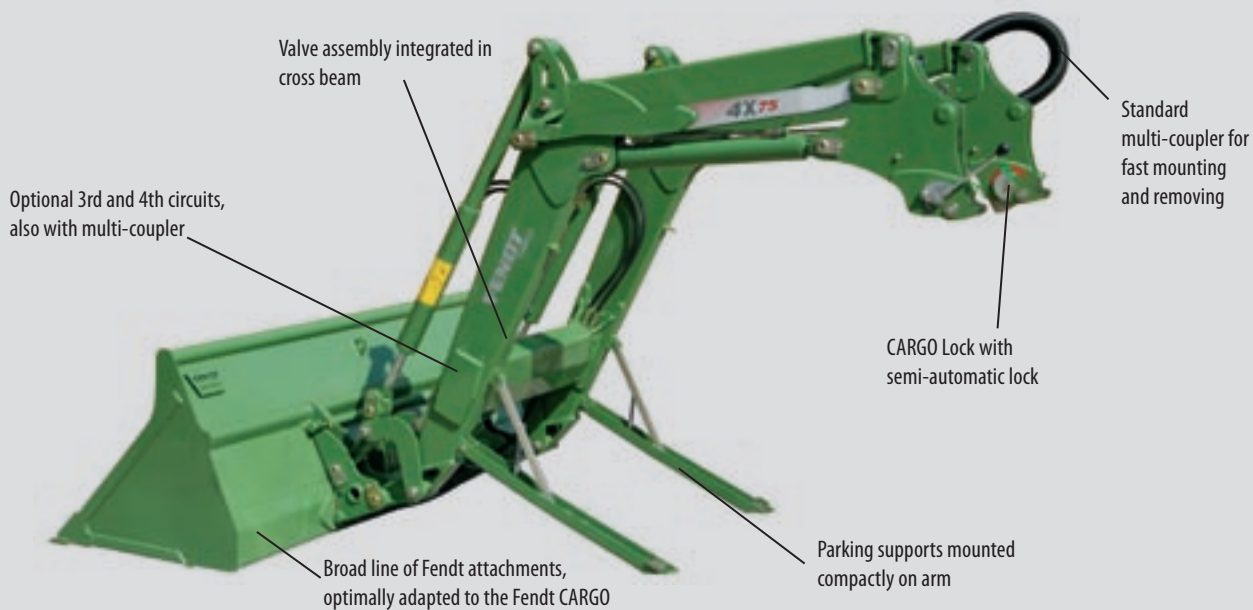
The Fendt profile is made of high-strength fine-grained steel with precise welding points.



All hydraulic components are fitted in the cross beam where they are well-protected against dirt and mechanical damage.



Torsion-resistant arm for rugged jobs.



**The basic prerequisite for all Fendt developments is high quality. A major objective during the development of the new CARGO was to build a perfect unit with the tractor. The technical specifications and overall design of the tractor and front loader have been optimally adapted to each other.**

## Z-bar linkage

Further evidence for the front loader's perfect adaptation to all the Vario tractors is the tried and tested mechanical parallel lift in the form of Z-bar linkage on the CARGO. This provides maximum visibility and the front windscreen can also be swung out fully at any time. The automatic attachment levelling feature ensures that implements are kept in the same position over the entire lifting height. You can monitor the position at all times with a tilt indicator.



- Vario and CARGO build one exceptional unit
- Perfect visibility
- Life-time design – durable
- Refined parallel lift through Z-bar linkage
- Developed with state-of-the-art CAD process

### **Lifetime design**

High-grade materials ensure durability for a long service life. High-strength fine-grained steel is the key element in the life-time design of the new Fendt CARGO and guarantees that the loader is lightweight and sturdy. The Fendt profile, which is welded in one continuous seam, ensures high stability and therefore a long service-life. The generously sized bearing points also guarantee play-free connections and keeps wear to a minimum.

### **New technology**

The use of modern design processes when developing the CARGO allowed it to be tailored perfectly to the Vario tractors. The width of the arm is very generous and the cross beam is located at the far front. Together these ensure optimum visibility.

## Mounting and removing made easy

The self-adjusting parking supports are mounted compactly on the arm.



A multi-coupler connects all hydraulic and electric lines at once, even under pressure.



Fendt CARGO Lock: fast, easy mounting and removing guaranteed.



**The new Fendt CARGO Lock makes mounting and removing the loader easy and fast. A multi-coupler also saves time, because it allows you to connect the electric and hydraulic lines all at once.**

### CARGO Lock

The semi-automatic locking system CARGO Lock does away with having to insert locking bolts, which is often difficult. This really simplifies mounting and removing. An indicator on the inside of the loader towers permits the driver to view the status of the locking system at all times from the driver seat.



- Automatic lock – CARGO Lock
- Maintenance-free mounting system
- Multi-coupler for mounting and removing the front loader is standard
- Parking supports integrated in front loader

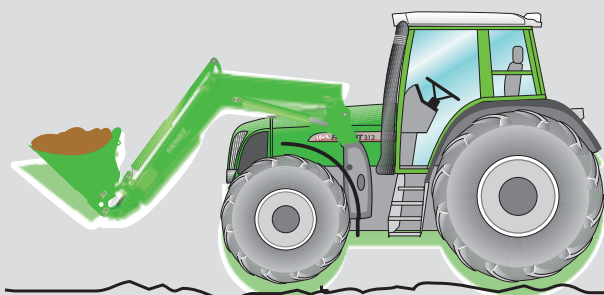
### **Multi-coupler**

Just one hand movement is all it takes to connect the hydraulic and electric lines. With the standard-equipped multi-coupler, incorrectly connected hoses, oil contamination and high leakage losses are a thing of the past. Disconnecting is equally easy and just as clean. Even when there is excess pressure in the loader, for example, because it was standing out in the sun, the CARGO can be coupled without problems.

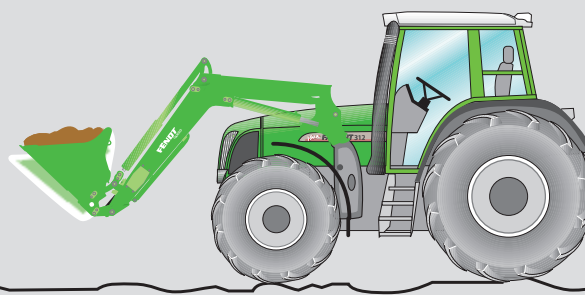
### **Perfect stand**

The parking supports have been completely redesigned. Manual setting and adjusting is not necessary, which saves valuable working time. Bolts or cotter pins no longer need to be inserted. The self-adjusting parking supports fold up compactly on to the arm.

## Operations with maximum comfort



Front loader without damping system:  
all shock loads are transmitted to the tractor.



Front loader with damping system:  
gas pressure reservoirs act as shock absorbers and prevent vibrations  
from being transmitted to the tractor body.

The integral damping system, together with front axle suspension and  
cab suspension, ensures superior ride comfort (optional).

The innovative cross beam offers many  
benefits: in addition to optimising visibility and  
completely protecting the hydraulic lines and  
valves, it guarantees easy access for retrofitting  
or service work.



**The overall concept of the new Fendt CARGO front loader is designed for exceptional driving comfort. The optional damping system protects your front loader, your tractor and, most important, your health. Thanks to sophisticated detail solutions, maximum visibility also contributes to a high degree of driving comfort.**

### **Comfortable working conditions**

Gas pressure reservoirs on the front loader act as shock absorbers. Shock loads cause hydraulic oil to press against a membrane in the gas pressure reservoir, which lowers peak loads reliably. The damping system, which lies completely protected in the cross beam, ensures exceptional suspension comfort. If precise implement control is required, the system can be switched off electrically, with a quick push of a button in the cab.



- Maximum ride comfort through integral damping system (optional)
- Gas shock absorbers and valves lie protected in the cross beam
- Fast and easy access to all components
- Electric engagement and disengagement from the cab
- Optimised visibility for all front loader work

The combination of front loader damping, front axle suspension and cab suspension is part of a well-thought out and ideally adapted suspension design. The system guarantees excellent ride comfort and fatigue-free work in uneven terrain and at high travel speeds.

#### **Best visibility**

The Z-bar linkage permits the front window to be swung out fully at any time during front loader work. A wide arm and a cross beam that is located at the far front, also contribute to the unobstructed view.

## Easy to use controls – maximum operating comfort for better performance



The layout of the operating elements ensures optimum ergonomics, no bothersome reaching for levers, and a Varioterminal puts all controls in view.



Fine adjustments to the valve functions can be made on the Varioterminal. For example, you can control the flow rate precisely and easily using the rotary controls and function keys.



The standard-equipped crossgate lever controls the front loader very precisely via two control valves. When working with a silage or bale grab, the third hydraulic circuit (optional) can be actuated with a push-button on the crossgate lever.



With the Cargo comfort controls, the third control circuit can be switched over to hydraulic attachment lock and the fourth control circuit to the optional damping system.

**The control concept was designed for optimum operating comfort. Two control valves can be controlled very precisely with the standard crossgate lever. Reaching from one lever to another is a thing of the past. The perfect adaptation of the front loader and tractor is also evident in the integration of the operating concept in the tractor.**

### **CARGO comfort controls**

Complex implement functions can be controlled with the optional third and fourth hydraulic circuits. These are activated and controlled by push-buttons on the crossgate lever. The optional hydraulic attachment lock and the vibration damping system (optional) can be conveniently operated from the driver seat.



- Practice-oriented operating concept
- Rapid reverse
- Pedal driving mode
- Flow control
- Third and fourth hydraulic circuits (optional)

The rapid reverse function on your Vario allows you to change driving direction quickly and easily, without wear. When driving in pedal mode with TMS, both of your hands are free, allowing you to change travel direction with your left hand and control the CARGO with your right.



Connection for third/fourth hydraulic circuit

## Maintenance – fast and easy

The bearing sleeves are made of high-grade bronze bearing material and have lubrication pockets..



The large-sized bearing sleeves ensure play-free connections, durability and a minimum of wear.



Wheel weights are available for optimum rear ballasting. They are mounted with the proven Fendt coupling system.



Universal weights round off the ballasting system perfectly.

**Since the designs of the front loader and the tractor have been specially adapted to each other from the very beginning, all maintenance work can be performed while the front loader is mounted. The front loader was designed to guarantee a very long service life through simple maintenance requirements and the use of the best materials.**

### **Robust and durable**

Maintenance and service-friendliness played an important role when developing the Fendt CARGO. The bearing sleeves are large, which makes them exceptionally robust and guarantees maximum durability.



- Best access to all maintenance points on the tractor
- Simple and fast maintenance on the front loader
- Large-sized bearing sleeves
- Protected, easily accessible lubrication nipples

#### **Safe and protected**

All lubrication nipples have been located so that they do not protrude and are therefore well-protected. Additionally, all maintenance points are fast and easy to reach.

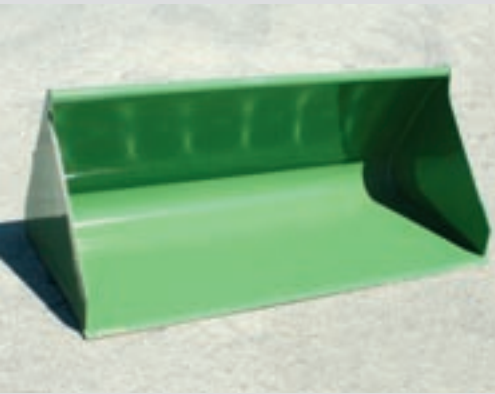
#### **Excellent accessibility**

While the front loader is mounted, all retrofitting and service work can be performed without trouble on the CARGO itself as well as the tractor. Even access to maintenance points, such as the oil and air filter or the radiator, is guaranteed when the front loader is mounted.



# Original Fendt attachments

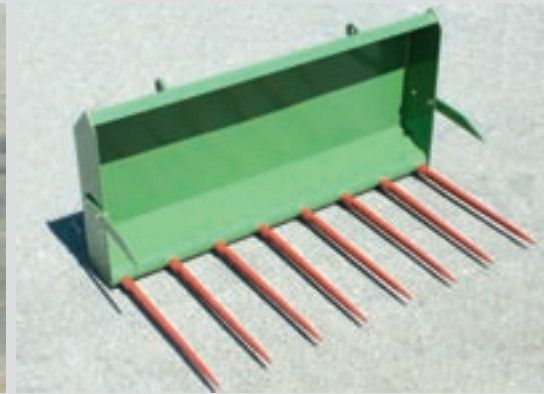
The light material bucket is available in the widths 1850 mm (0.976 m<sup>3</sup> flush volume) and 2400 mm (1.265 m<sup>3</sup> flush volume)



The universal bucket is available in four different sizes: 1600 mm wide (0.538 m<sup>3</sup> flush volume), 1850 mm wide (0.622 m<sup>3</sup> flush volume), 2100 mm wide (0.706 m<sup>3</sup> flush volume) and 2400 mm wide (0.807 m<sup>3</sup>).



The manure fork is available in 1500 mm and 2100 mm widths.



The heavy-duty bucket is available in the widths 1600 mm (0.512 m<sup>3</sup> flush volume) and 2100 mm (0.672 m<sup>3</sup> flush volume)



The multi-bucket is available in two sizes: 1500 mm wide (0.85 m<sup>3</sup> flush volume) and 1900 mm (0.95 m<sup>3</sup> flush volume).



The silage cutter is 1400 mm wide and holds a volume of 1.07 m<sup>3</sup>.

**The original Fendt attachments according to ISO standard are perfectly adapted to the Fendt CARGO. Used together, you get the highest possible load capacity. A 55° dumping angle permits complete emptying of the attachment, and the 48° backward tilt complete filling. With the hydraulic attachment lock (optional), attachments can be changed without having to climb out of the tractor.**



The bale grab is 1300 mm wide. It is designed for bales with an outer diameter ranging from 1200 mm to 1600 mm.

The bale fork has three tines and is 1100 mm wide.

The pallet fork is designed for loads up to 1500 kg.



The standard-equipped semi-automatic attachment lock is operated with a single lever.



A hydraulic attachment lock is available as an option (requires 3rd hydraulic circuit).

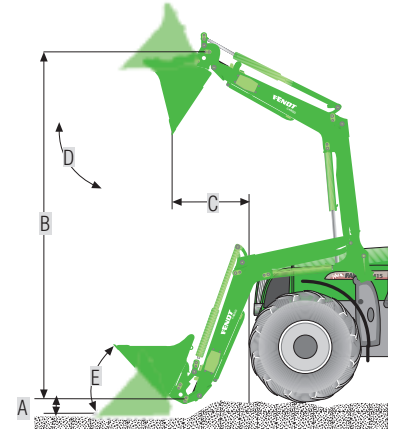


The optional third and fourth hydraulic circuit for attachment actuation can also be fitted with multi-couplers upon request.

# Technical specifications



Front loader model		4X/75	4X/80	4x/85	5X/85	5X/90
<b>Range</b>						
<b>300 V</b>	cont. lift capacity daN	1940	-	-	-	-
	max. lift capacity daN	2250	-	-	-	-
	lifting height mm <sup>1)</sup>	4050	-	-	-	-
	digging depth mm <sup>1)</sup>	225	-	-	-	-
	dumping distance (max. height) <sup>1)</sup>	1260	-	-	-	-
	dumping distance (3.5 m height) <sup>1)</sup>	1780	-	-	-	-
<b>400 V</b>	cont. lift capacity daN	1940	2260	-	-	-
	max. lift capacity daN	2250	2620	-	-	-
	lifting height mm <sup>1)</sup>	4125	4125	-	-	-
	digging depth mm <sup>1)</sup>	180	180	-	-	-
	dumping distance (max. height) <sup>1)</sup>	1210	1210	-	-	-
	dumping distance (3.5 m height) <sup>1)</sup>	1750	1750	-	-	-
<b>700 V</b>	cont. lift capacity daN	-	-	2600	2600	2950
	max. lift capacity daN	-	-	3000	3000	3460
	lifting height mm <sup>1)</sup>	-	-	4150	4460	4460
	digging depth mm <sup>1)</sup>	-	-	130	250	250
	dumping distance (max. height) <sup>1)</sup>	-	-	980	1080	1080
	dumping distance (3.5 m height) <sup>1)</sup>	-	-	1610	1910	1910
<b>800 V</b>	cont. lift capacity daN	-	-	-	2600	2950
	max. lift capacity daN	-	-	-	3000	3460
	lifting height mm <sup>1)</sup>	-	-	-	4500	4500
	digging depth mm <sup>1)</sup>	-	-	-	250	250
	dumping distance (max. height) <sup>1)</sup>	-	-	-	1080	1080
	dumping distance (3.5 m height) <sup>1)</sup>	-	-	-	1870	1870



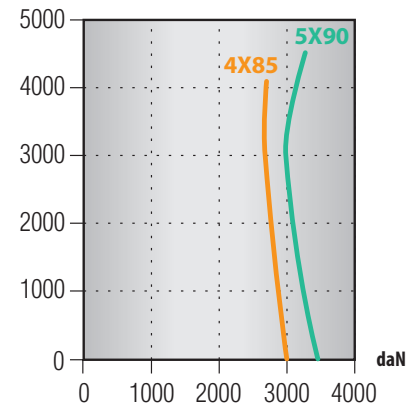
- A** Digging depth (mm)
- B** Lifting height (mm)
- C** Dumping distance (mm)
- D** Angle of emptying
- E** Angle of backwards tilt

<sup>1)</sup> depends on tyres      1 daN = 10 N = approx. 1 kg

Front loader model	4X / 75	4X / 80	4X / 85	5X / 85	5X / 90
<b>Equipment</b>					
Lifting cylinder da	■	■	■	■	■
Quick-attach frame	■	■	■	■	■
Manual implement lock	■	■	■	■	■
Synchronous tipping cylinder	■	■	■	■	■
Mechanical parallel lift	■	■	■	■	■
Front guard	■	■	■	■	■
Level indicator	■	■	■	■	■
Damping system da	□	□	□	□	□
Pipe rupture safety feature <sup>2)</sup>	■	■	■	■	■
Lowering throttle valve	■	■	■	■	■
Load holding valve	■	■	■	■	■
Multi-coupler	■	■	■	■	■
Hydraulic attachment lock	□	□	□	□	□
3rd & 4th hydraulic circuit	□	□	□	□	□
Multi-coupler for 3rd & 4th circuit	□	□	□	□	□
<b>Tractor equipment</b>					
Crossgate lever	■	■	■	■	■
Front window swings out fully	■	■	■	■	■
3rd & 4th control circuit	□	□	□	□	□
Multi-coupler	□	□	□	□	□

■ = standard / □ = optional / - = not avail. <sup>2)</sup> not applicable if damping system is installed

Lifting height in mm



Sales Agent:

All data regarding delivery, appearance, performance, dimensions and weight, fuel consumption and running costs of the vehicles correspond with the latest information available at the time of going to press. Changes may be made before the time of purchase. Your Fendt dealer will be pleased to supply you with up-to-date information.



AGCO GmbH  
Fendt Marketing  
87616 Marktobendorf  
Fax: 0 83 42 / 77-684  
www.fendt.com